

COMeN Share with the World



V2/V5 Ventilator

Technology Guides Greatness



Shenzhen Comen Medical Instruments Co., Ltd.

Add: Floor 10, Floor 11 and Section C of Floor 12 of Building 1A & Floor 1 to Floor 5
of Building 2, FIYTA Timepiece Building, Nanhuan Avenue, Matian Sub-district,
Guangming District, Shenzhen, Guangdong, 518106, P.R. China
Tel: +86-755-2643 1236 Fax: +86-755-2643 1232 Website: en.comen.com E-mail: info@szcomen.com

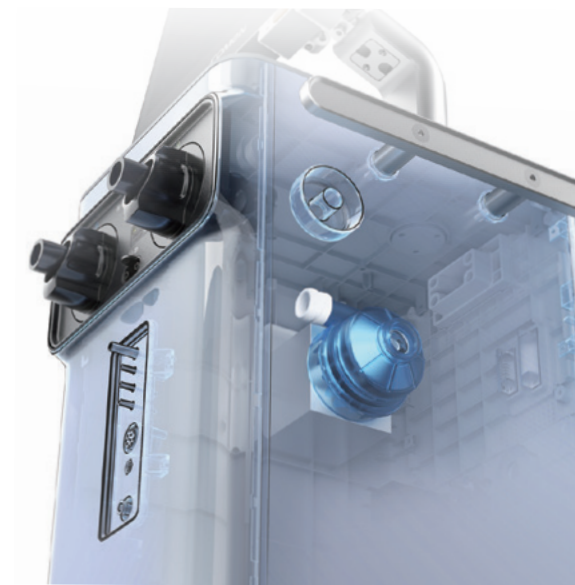
P/N: EN-V2/V5-8P-20230914-V1.0

Redefining the ICU Ventilator

To cope with present and potential clinical challenges, V5 is equipped with a turbine-driven system. Advanced ventilation modes and comprehensively monitored parameters allow medical providers to step closer to the complete clinical picture of patients. A 15.6-inch TFT touchscreen with an intuitive UI system facilitates a smooth workflow: V5, a solution for modern respiratory support.

Turbine-driven System, Flexible Options

Rather than connecting an air compressor or a central air supply system, the ventilator with a turbine unleashes its mobility and flexibility. Upgraded control algorithms of the turbine ensure strong power.



- Ultra-sensitive response
- Noise $\leq 45\text{dB}$
- Maximum flow rate $\geq 210\text{L/min}$
- Minimum lifespan $\geq 20,000$ hrs



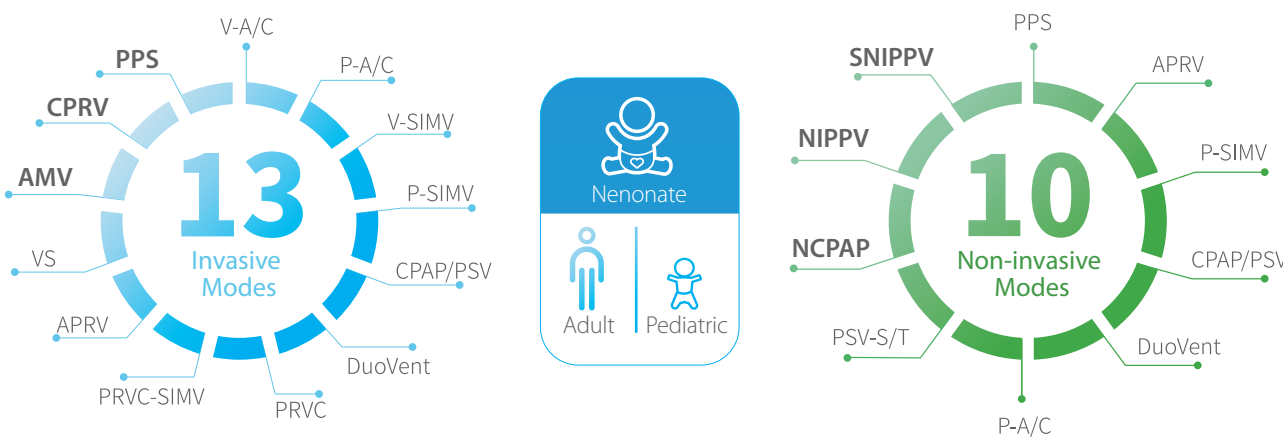
The screen can be installed on the ceiling pendant to save space on the floor between bed intervals. For the infectious department, the screen can be put outside the ward. The medical providers can control the screen outside, and the main unit works beside the patient.



Equipped with a trolley, two-cylinder brackets, and built-in lithium batteries with 300 minutes capacity. V5 meets the needs of intra-hospital transportation.

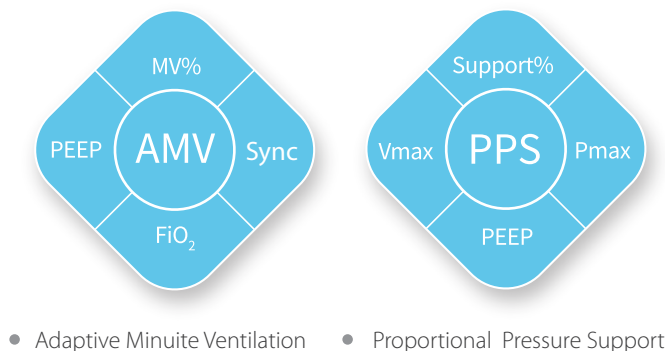
Sequential Treatments

With 18 ventilation modes available, V5 provides full patient support throughout their treatment journey, from admission to discharge. Our ventilators can assist patients in various stages, from intubation to weaning, invasive to non-invasive ventilation, and even during high-flow oxygen therapy. Our V5 ventilator will meet all your needs without switching between different devices during recovery.



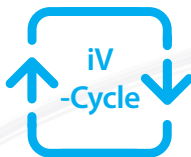
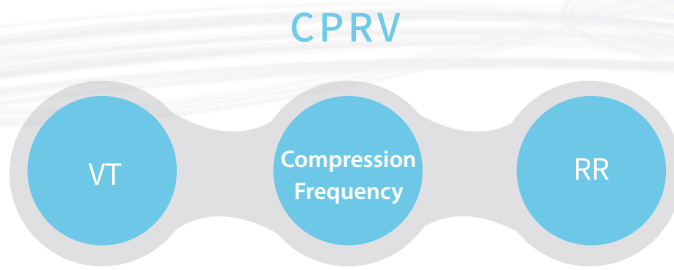
Advanced Breathing Support

Upgraded synchronization technologies highly reduce the incidence rate of patient-ventilator asynchrony (PVA). More straightforward operation for therapists, more comfortable treatment for patients.



CPR Assisting Tools

Facilitate the clinical CPR process
Two-step activation
Shield non-related alarms, minimize interference
High-quality CPR ventilation support



Brand new iV-Cycle technology gives V5 the ability to sense a patient's demand for both of inspiration and expiration intelligently and improves human-machine synchronization.



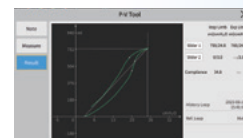
All-round Monitoring, Better Diagnosing

100+ parameters monitoring guarantees patient safety.



Weaning Tools

SBT, P0.1, NIF, RSBI
To prevent reintubation by referring highly accurate weaning index.



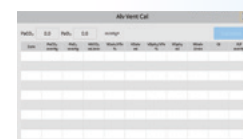
Lung Protective Tools

The Stress Index, the C20/C Index, the Transpulmonary Pressure, the PV tool, and Lung Recruitment tool (SI)
To reduce ventilation associated lung injuries (VALI) and length of stay.



Energy Metabolism Calculation

Calculating a patient's energy expenditure guides rational nutritional support and prevents under- or over-nutrition.



Alveoli Ventilation Calculation

Measuring alveolar dead space, alveolar tidal volume, oxygenation index and helping medical providers to assess patient ventilation, respiration, and oxygenation.



Accurate Oxygenation, Smart Assessment

Collecting data from high-flow oxygen therapy patients for accurately assessing the prognosis status of ARDS. When there is no arterial blood gas analysis, the oxygenation index will assist in the prediction and prognosis judgment of respiratory diseases.



Efficient Communication, Intelligent Interconnection

Ventilators connect with syringe pumps, monitors, and intensive care information systems, forming a critical care solution. Such a network will energize hospital clinical service, research, and management and bring hospitals to a new level.

